

Ask yourself the following questions:

- Do you have to cancel doctor's appointments because you have to care for a family member?
- Is temporary care difficult to find for your family member?
- Are there chores and other responsibilities around the house that never get done because you are occupied with assisting a family member?
- In the event of an emergency do you have someone you can trust with the care of a family member?

If you answered yes to any of the following questions then respite care may be a potential resource you and your family can utilize.



For more information about the Exceptional Family Member Program and respite care services contact:

**Army Community Service Center
Strom Thurmond Bldg, Room 120
Fort Jackson, SC 29207**

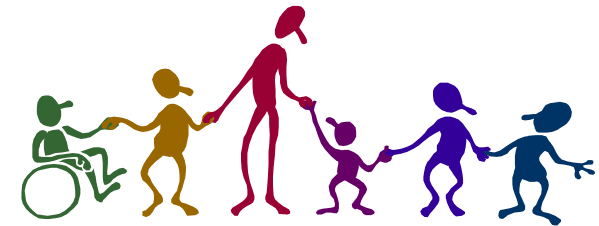
**Comm: (803) 751- 5256
DSN: 734-5256
FAX: (803) 751-5524**



Hours of Operation:
Monday – Friday 0730 – 1630
(closed all Federal Holidays)

EXCEPTIONAL FAMILY MEMBER PROGRAM

RESPITE CARE



What is the Exceptional Family Member Program?

The Exceptional Family Member Program (EFMP) is a mandatory enrollment program that works with other military and civilian agencies to provide comprehensive and coordinated community support, housing, educational, medical, and personnel services to families with special needs

What is an exceptional family member?

An exceptional family member is a family member (child or adult) with any physical, emotional, developmental, or intellectual disorder that requires special treatment, therapy, education, training, or counseling.



What is respite care?

Respite care provides temporary relief to both families and caregivers, thus allowing them to rest and relax; engage in other daily activities; cope with additional daily responsibilities; and grow and stabilize the family unit. In addition, respite care services can be targeted to specific disabilities.

Who qualifies for respite care?

Respite care services are available to family members with special needs who are enrolled in the Exceptional Family Member Program and who meet specific medical criteria. The qualifying EFM is eligible to receive a maximum of 40 hours monthly. More details regarding eligibility for Army respite care can be found at:

www.militaryhomefront.dod.mil/efm

What ages can use respite care?

Respite care is available from infancy to adulthood.

How does a soldier enroll in the respite care program?

The soldier contacts the nearest Army EFMP to begin the assessment process and obtain the enrollment and medical forms. Once the enrollment forms are completed the medical form will be forwarded to the nearest Army military treatment facility.

Where is respite care available on Fort Jackson?

Presently, respite care is available at Child and Youth Services (CYS). Individuals living off post may also utilize respite care services through a provider of their choice, in accordance with the Army respite care regulations.

